

ST. LOUIS COUNTY PLANNING COMMISSION  
MONDAY March 22, 2010 – 7:00 P.M.  
41 S. CENTRAL, CLAYTON, MO 63105  
COUNTY COUNCIL CHAMBERS

PET. NO.	PETITIONER	REQUEST	APPROXIMATE LOCATION	COUNCIL DISTRICT	SCHOOL DISTRICT	NO. OF ACRES
10-10 and 11-10	Lutheran Senior Services	R-5 to R-6 with a P.E.U. in R-6	East side of MacKenzie Road at Vita Drive.	5	Affton	4.9

*The Public Hearing Notice may be viewed on the Internet at:*

*<http://www.stlouisco.com>*

*or you may send comments via E-Mail to the Planning Commission c/o Gail Choate at:*

*[gchoate@stlouisco.com](mailto:gchoate@stlouisco.com)*

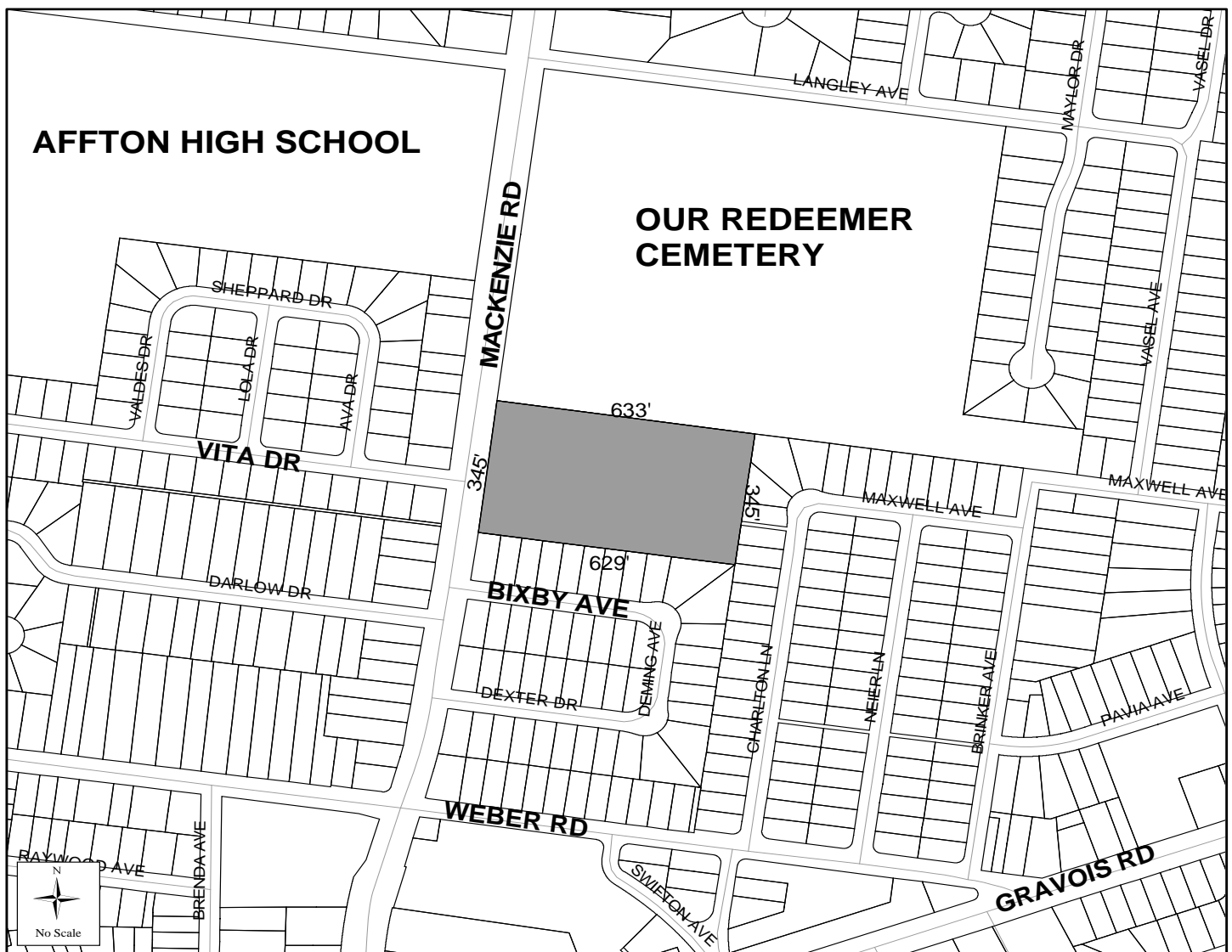
**IF YOU WISH TO ATTEND THIS PUBLIC MEETING AND REQUIRE ACCOMMODATION DUE TO DISABILITY, PLEASE CONTACT THE DEPARTMENT OF PLANNING 24 HOURS IN ADVANCE AT (314) 615-2520 OR (314) 615-5467 (TTY - for the hearing impaired).**

St. Louis County Planning Commission will hold a public hearing at 7:00 P.M. on Monday MARCH 22, 2010 in the County Council Chambers, Administration Building, County Government Center, 41 South Central Avenue, Clayton, Missouri 63105. If you wish to attend this public meeting and require accommodation due to disability, please contact the Department of Planning 48 hours in advance at (314) 615-2520 or (314) 615-5467 (TTY - for the hearing impaired). **The Public Hearing Notice may be viewed on the Internet at: <http://www.stlouisco.com> or you may send comments via E-Mail to the Planning Commission c/o Gail Choate at [gchoate@stlouisco.com](mailto:gchoate@stlouisco.com)** The Planning Commission may recommend and the County Council may enact by ordinance a zoning district other than that requested in the petition, provided that the recommendation or ordinance is for a district classification of the same use type as that requested by the petition. The following request will be considered at that time:

**P.C. 10-10 LUTHERAN SENIOR SERVICES** c/o Mark W. Schoedel, 1150 Hanley Industrial Court, St. Louis, Missouri 63144 – a request for change in zoning from R-5 6,000 square foot Residence District to R-6 2,000 square foot Residence District for a 4.9 acre tract of land.

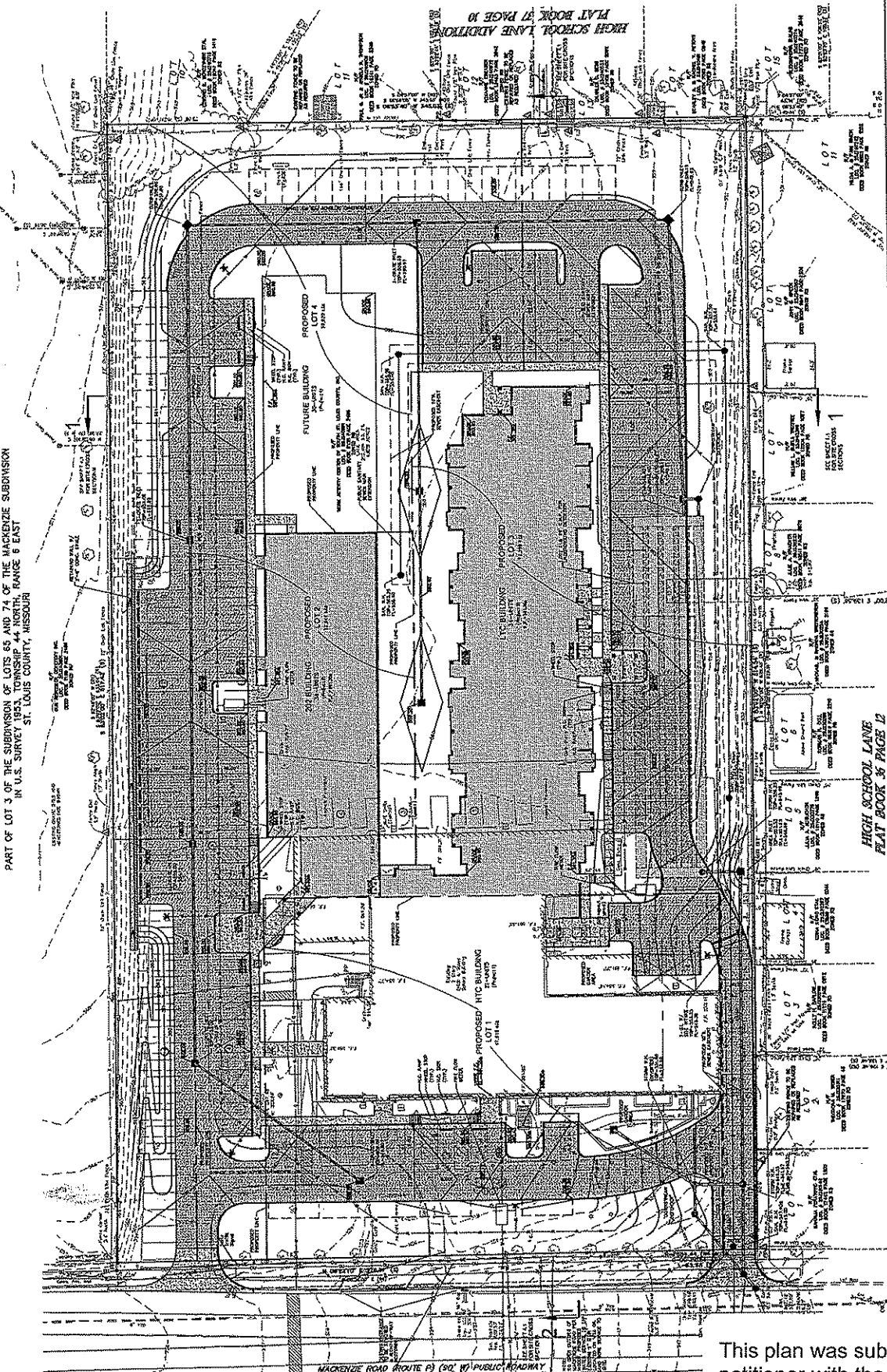
AND

**P.C. 11-10 LUTHERAN SENIOR SERVICES** – a request for a Planned Environment Unit (P.E.U.) procedure in the R-6 2,000 square foot Residence District for the same 4.9 acre tract of land located on east side of MacKenzie Road at Vita Drive. **Proposed use: Multiple family residences for the elderly.**



**SITE DEVELOPMENT CONCEPT PLAN**  
for  
**MACKENZIE APARTMENTS**

PART OF LOT 3 OF THE SUBDIVISION OF LOTS 65 AND 74 OF THE MACKENZIE SUBDIVISION  
IN U.S. SURVEY OF A CERTAIN TRACT OF LAND IN RANGE 9 EAST  
ST. LOUIS COUNTY, MISSOURI



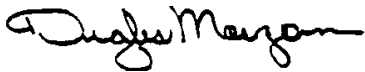
<p><b>8520 MACKENZIE</b> SAINT LOUIS, MO 63123</p>	<p>SAINT LOUIS DESIGN ALLIANCE 616 CALLEMAN BLVD. ST. LOUIS, MO 63102 www.sld.com</p>	<p>8520 MACKENZIE SAINT LOUIS, MO 63123</p>
	<p>SD2</p>	<p>DEVELOPMENT CONCEPT PLAN</p>

This plan was submitted by the petitioner with the application and is provided for informational purposes only.

Files and plans are available for inspection at the office of the St. Louis County Department of Planning, Fifth Floor, County Government Administration Building, 41 South Central Avenue, Clayton, Missouri 63105, during the following hours:

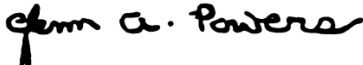
Monday through Friday 8:00 a.m. - 5:00 p.m.  
Telephone: (314) 615-2520

ST. LOUIS COUNTY PLANNING COMMISSION



Douglas D. Morgan, Chairman

ATTEST:



Glenn A. Powers  
Director of Planning