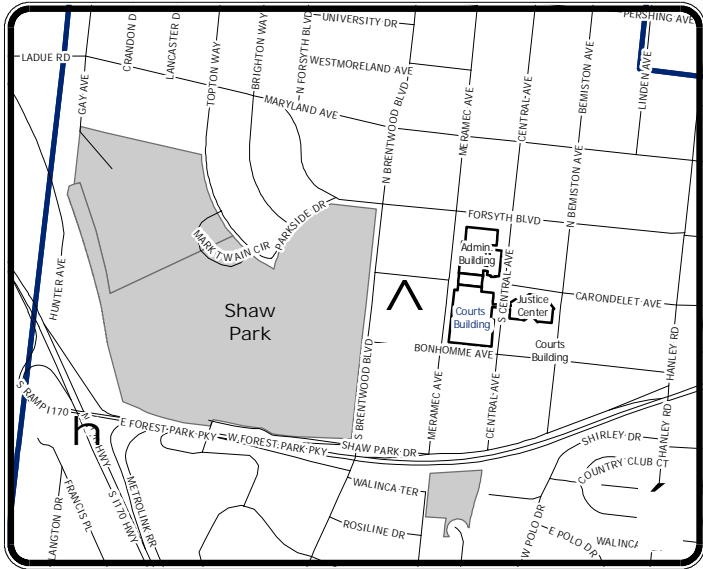
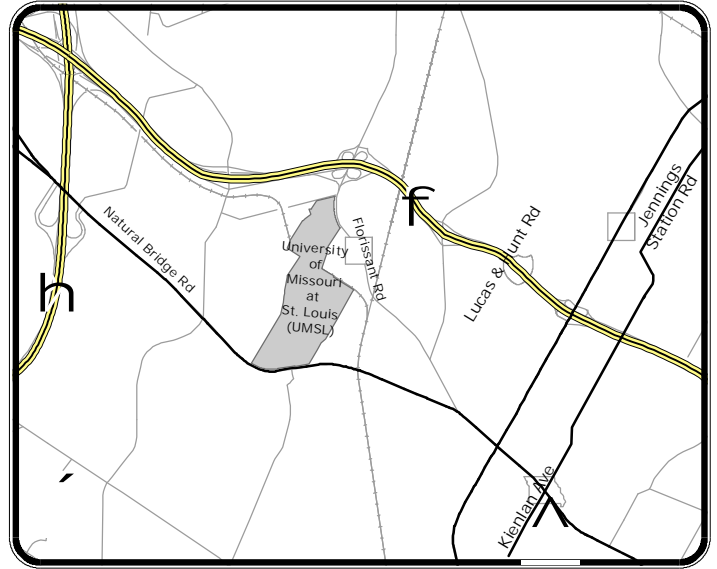


# St. Louis County Health Centers



St. Louis County Health Department  
Administration Offices

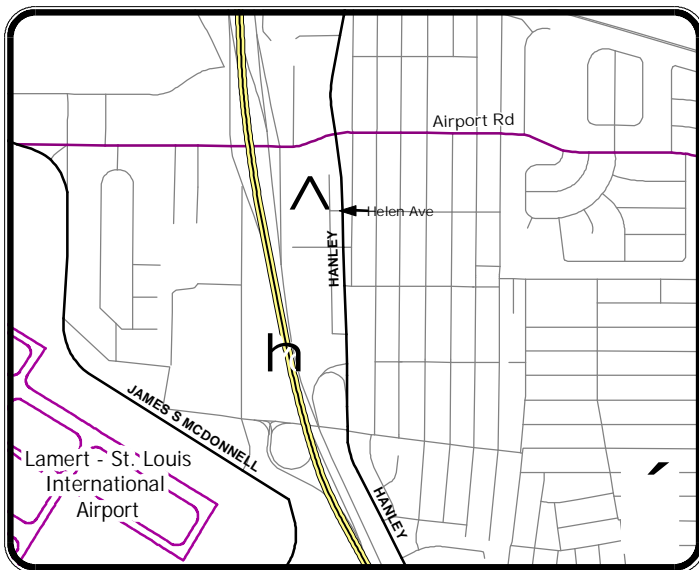
111 South Meramec  
Clayton, MO 63105  
Monday-Friday 8:00AM-5:00PM



North Central Community Health Center

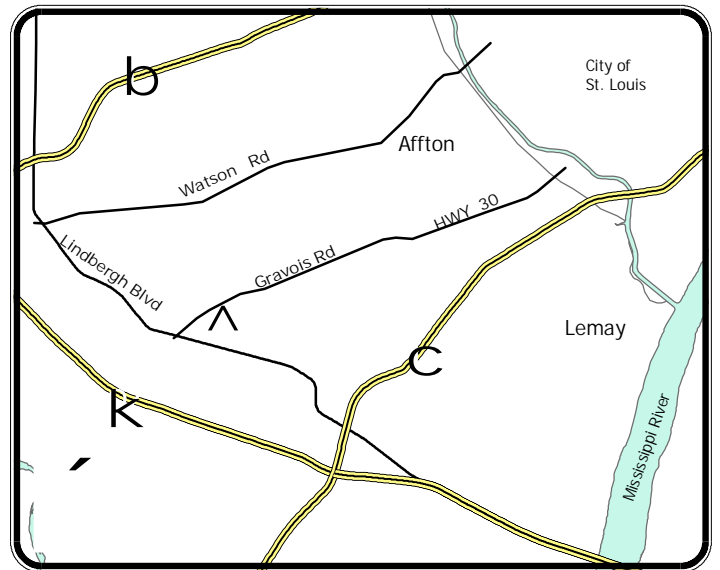
4000 Jennings Station Road  
St. Louis, MO 63121  
Phone: (314) 679-7800  
Monday, Tuesday, Wednesday and Friday:  
8:30 a.m. - noon and 1 - 5 p.m.  
Thursday: 9:30 a.m. - noon and 1 - 6 p.m.  
Closed on the first Thursday morning of each month.

## HEALTH DEPARTMENT (314) 615 - 0600



John C. Murphy Family Center

6065 Helen Avenue  
Berkeley, MO 63134  
Phone: (314) 522-6410; TTY: 522-1260  
Monday, Wednesday, Thursday and  
Friday: 8:30 a.m. - 5:00 p.m.  
Tuesday: 9:30 a.m. - 6:00 p.m.  
Closed on the first Thursday morning of each month.



South County Health Center

4580 South Lindbergh Boulevard  
Saint Louis County, MO 63127  
Phone: (314) 842-1300  
Monday, Tuesday, Thursday and Friday:  
8:30 a.m. - noon and 1 - 5 p.m.  
Wednesday: 9:30 a.m. - noon and 1 - 6 p.m.  
Walk-in immunizations:  
8:30 - 10:30 am, 1 - 3 pm.  
Closed on the first Thursday morning of each month.